



PARDUS

**LEVER ACTION SHOTGUN
INSTRUCTION MANUAL
MODEL PARDUS LAX MF**

**READ THE INTRUCTIONS AND
WARNINGS IN THIS MANUAL CAREFULLY
BEFORE USING THIS FIREARM**

SAFETY FIRST

Please do not use your shotgun before reading safety rules and this manual.

Observe these rules of safe gun handling.

1. Always keep the muzzle pointed in a safe direction. Watch the muzzle at all time, never point a gun accidentally or intentionally, at any person or anything you do not intend to shoot. Identify the target before shooting; do not shoot at sounds.

2. Always treat a gun as if it is loaded - it may be!

3. Keep your finger off the trigger while operating the action and at all other times until you are ready to shoot.

4. Keep the safety "on" or in the "safe" position at all times until you are ready to fire. Do not rely on your gun's safety, the safety on any gun is a mechanical device and is not intended as a substitute for common sense or safe gun handling.

5. Learn gun functions and handles. If you do not thoroughly understand the proper use and care of your gun, seek the advice of someone who is knowledgeable.

6. Do not alter or modify any part of the firearm.

7. Store guns unloaded, separate from any ammunition, and out of the reach of children.

8. Be sure the barrel is clear of any obstructions before loading. Make it a habit to check the barrel every time before loading.

9. Be sure you have and use the proper ammunition. A 20 gauge shell will enter a 12 gauge chamber far enough so that a 12 gauge shell can be loaded behind it. Also, 3 inch shell may fit into a 2 inch chamber, but the crimp at the mouth of the shell will unfold into the forcing cone. If either of these things occur and you fire the gun, the gun will explode, damaging the gun and possibly causing serious injury or death to you and those around you.

10. Wear protective shooting glasses and adequate ear protection when shooting.

11. Never climb or jump over anything, such as a tree, fence, or ditch, with a loaded gun. Put safety ON. Open the barrel on barrel break shotguns, remove the shells/discharge the chamber on pump and semi-auto shotguns and hand the gun to someone else or place it on the ground on the other side of the obstacle before crossing it yourself. Do not lean a gun against a tree or other object; it could fall and possibly discharge.

12. Do not shoot at a hard surface or at water. Bullet and shot can ricochet or bounce off and travel in unpredictable directions with great velocity.

13. Never transport a loaded gun. DO NOT place a loaded gun into a vehicle. The gun should be unloaded and placed into a case when not in use.

14. Never drink alcoholic beverages before or during shooting.

15. Never try to repair the shotgun on your own if you are not educated or expert of. This may cause un-willed damage to your gun which may seriously injure you or someone around you.

16. Never fire your gun without choke tubes (if comes with interchangeable choke tubes and a thread in the muzzle) snugly tightened in barrels.

ABOUT LEVER ACTION SHOTGUN

Pardus lever action shotgun is manually operated. Once a Shell has been fired, the locking lug in the bolt moves down, unlocking the gun. The lever can then be moved forward and backward again, ejecting empty shell and loading a cartridge.

SAFETY SWITCH OR BUTTON

The safety is designed to stop trigger mechanism.

DON'T RELY ON YOUR GUN'S SAFETY, TREAT EVERY GUN AS IF IT LOADED AND READY TO FIRE. The safety on any gun is a mechanical device and it is not intended as a substitute for common sense or safe gun handling. Always keep the muzzle pointed in a safe direction.

A-The safety is located behind the trigger, and protection against accidental or unintentional discharge under normal usage when properly used.

B-To engage the safety, push the button so that it protrudes from the right side of the gun and the **RED BAND MARKING CAN NOT BE SEEN**. The safety should always be in the "on" or "safe" position until you intent to fire the gun.

C-When you are ready to fire the gun, press the safety button to the "off" position so that the safety protrudes from the left side of the gun and the **RED BAND MARKING IS SHOWING**.

DANGER: The gun will fire when the trigger is pulled intentionally or accidentally when the **RED BAND MARKING IS SHOWING**.

ASSEMBLY



Put safety in the "ON" position. Point the gun in a safe direction (**Photo 1**)



Remove the gun from box and unscrew the fore-end cap (**Photo 2**)



Remove the fore-end (**Photo 3**)



Unscrew the barrel locker nut (**Photo 4**)



Hold the barrel ahead of the guide ring and slide the barrel into the receiver. DON'T FORCE IT! (**Photo 5**)



Screw on the barrel locker nut (**Photo 6**)



Insert the fore-end (**Photo 7**)



Screw on and fix the fore-end locker nut (**Photo 8**)



Insert the magazine and shotgun is ready for use (**Photo 9**)

DISASSEMBLY



Put safety in the "ON" position. Point the gun in a safe direction (**Photo 10**)



Remove the magazine to start disassemble the gun (**Photo 11**)



Unscrew the fore-end cap (**Photo 12**)



Hold the barrel ahead of the guide ring and **FORCE IT!** (**Photo 13**)



Loosen up the barrel locker and unscrew it (**Photo 14**)



Slide the barrel guide ring over and remove the barrel (**Photo 15**)



Unscrew the connector the lever from the trigger guard (Photo 16)



Unscrew the connector screw of two rods of mechanism and lever (Photo 17)



The cartridge ramp plastic which engaged to the front of trigger guard must be banded down from its upright position on 90 degrees (Photo 18)



Remove the mechanism and action bar from receiver (Photo 19)



Filling a magazine by pushing each cartridge inside (Photo 20)

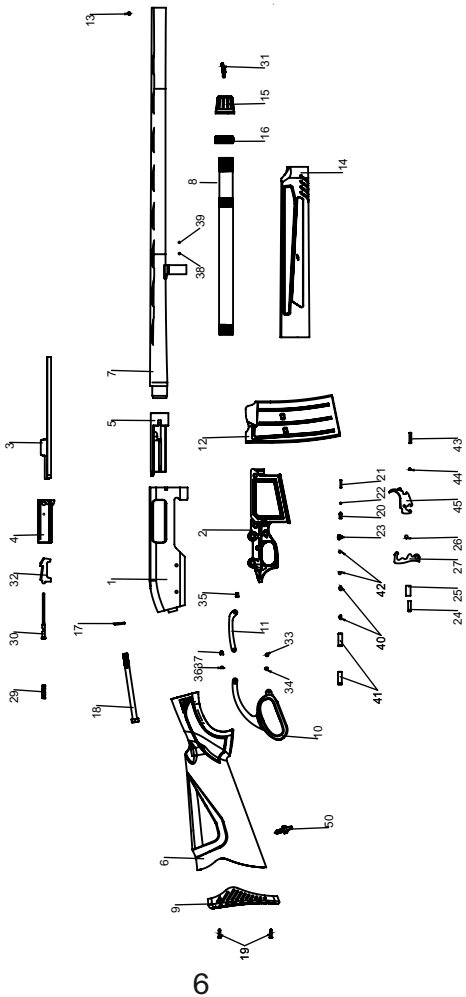


Filling cartridges from receiver (Photo 21)



Wearing a ring during usage of lever action shotgun may cause injury of fingers or damage the ring (Photo 22)

LEVER ACTION MAGAZINE FED SHOTGUN GENERAL ASSEMBLY








**LEVER ACTION SHOTGUN
GENERAL ASSEMBLY PART LIST**

PART NO	DESCRIPTION	PART NO	DESCRIPTION
1	RECIEVER	26	HAMMER SPRING
2	TRIGGER GUARD	27	HAMMER
3	ACTION BAR	28	FIRING PIN RETAINER
4	MECHANISM OR BOLT	29	FIRING PIN SPRING
5	BARREL EXTENTION	30	FIRING PIN
6	STOCK	31	SWIVEL (BARREL)
7	BARREL	32	LOCK
8	FORE-END TUBE	33	LEVER CONNECTION LOCK SCREW
9	RECOIL PAD	34	LEVER CONNECTION SCREW
10	LEVER	35	LEVER ARM CONNECTION SCREW
11	LEVER ARM	36	LEVER BUSHING
12	MAGAZINE	37	LEVER SCREW
13	FRONT SIGHT	38	FORE-END CAP LOCKING SPRING
14	FORE-END	39	FORE-END CAP LOCKING PIN
15	FORE-END CAP	40	RECIEVER PIN RETAINING SPRING
16	BARREL RETAINER NUT	41	RECIEVER PIN RETAINING BUSHING
17	STOCK SCREW WASHER	42	RECIEVER PINS (2PCS.)
18	STOCK SCREW	43	TRIGGER PIN
19	RECOIL PAD SCREWS (2PCS.)	44	TRIGGER SPRING
20	SAFETY BUTTON BUSHING	45	TRIGGER
21	SAFETY BUTTON PIN	46	EXTRACTOR PIN
22	SAFETY BUTTON SPRING	47	EXTRACTOR SPRING PIN
23	SAFETY BUTTON	48	EXTRACTOR SPRING
24	HAMMER PIN	49	EXTRACTOR
25	HAMMER PIN CAPSULE	50	SWIVEL (STOCK)

USAGE OF CHOKE TUBES

The choke is what controls the openness or tightness of the pattern of your shotgun. The chart below lists the choke available (from open to tight), and the corresponding marks that indicate the choke of your specific shotgun.

	C	IC	M	IM	F
CHOKE TUBE					
BBLS	*****	****	***	**	*

Never fire or run gun cleaning tools through a barrel that uses choke tubes without having a choke tube installed. The threads of the choke and the internal threads of the barrel should be cleaned after each use and before installation of the tube.

To install a tube, insert the tube into the barrel and tighten with your fingers. Once the tube is tightened, tighten with the appropriate choke-tube wrench until the tube is snug. **DO NOT over tighten or forcefully tighten with wrench.**

USAGE OF STEEL SHOT

The choke (bore constriction) in all modern shotguns has been established based on the pattern performance of shot shells loaded with lead shot. When using the steel shot shells, you will notice the different performance in pattern density versus the established lead shot pattern, because the steel shot is harder and lighter than lead shot.

You should be aware of the following differences and cautions:

Never shot steel shot loads in a full choked barrel or full choke tubed barrel. To do so may cause the barrel to swell or rupture. In general, steel shot fired with a modified choke will produce the equivalent of a lead full choke pattern. This will be right for all steel shot sizes up to and including no.2. The established improved cylinder chokes will produce the equivalent of a (lead) modified choke pattern.

All steel shot sized larger than no. 2, and including special sized such as - F-, "T" etc., should be used only with improved cylinder chokes, will produce patterns equivalent to (lead) full choke patterns. The established cylinder choke or bore will produce the equivalent of a modified (lead) pattern.

MAINTANCE AND CLEANING

Caution: Make sure the gun is UNLOADED and take help from an experienced person or gunsmith if you do not have self-confidence of right maintains.

1. Make sure the broad, polished finally fitted mating surface of the breech block and receiver is especially clean and lightly oiled with high quality gun oil. Do not use silicone or lanolin.

2. Run an oil patch through the bore with a cleaning rod starting from the breech end. To prevent leading use a cleaning solvent and brass brush to clean the bore periodically. Follow this cleaning with one or two clean oil patches. Important: If your gun is equipped with coke tubes, do not use a brass brush to clean the barrels without having a choke tube installed. Barrels that utilize choke tubes must also have the choke tubes removed to clean and oil the threads inside the barrel and the choke tubes themselves. This will protect the threads and prevent dirt build up that can cause tubes difficult to remove.

Do not over tighten choke tubes. Wipe all exposed metal surface with an oiled cloth before storing. Do not squirt or pour oil inside of the mechanism because it may hamper proper functioning. After extended periods of heavy use, your gun should be taken to a qualified gunsmith for disassembled for professional cleaning and lubrication.

3. Care for your food stock and forearm the same way you would care a piece of furniture with the same finish.

WARRANTY AND AFTER SALES SERVICE

Pardus agrees to service its products thru your country importer free of charge for defects in materials and workmanship in accordance with the service agreement listed below.

The obligation of Pardus under this agreement is limited to the repair or replacement of unserviceable parts and does not cover any incidental or consequential damages. Other than the express warranty contained here in Pardus makes no warranties, express or implied.

Pardus will repair or replace any unserviceable part(s) for two (2) years from date of purchase in accordance with the above warranty statement provided your product had not been altered, abused, willfully damaged or damaged by overpressure ammunition. And further guarantees to supply parts with its cost for following additional 5 years.

This agreement is not transferable; its benefits apply only to the original purchaser. To obtain free service during the time this agreement is in effect, make sure your product is unloaded, and send it to your Customer Importer.

If you don't know the importer and would like us to track for you, please provide us your country information and the serial number of your gun.

This agreement and the warranties contained herein are void if you are not the licenced owner of the gun.



PARDUS SAVUNMA VE AV SANAYİ İTHALAT VE İHRACAT LTD. STİ.

Dudullu OSB, İmes San. Sitesi B Blok 205. Sk. No.22

Ümraniye 34776 - İstanbul / TÜRKİYE

P: +90 216 642 2353 PBX • F: +90 216 642 2360

www.pardusarms.com

pardusarms@pardusarms.com