



**PARDUS**

**LEVER ACTION SHOTGUN  
INSTRUCTION MANUAL  
MODEL PARDUS LAX**

**READ THE INTRUCTIONS AND  
WARNINGS IN THIS MANUAL CAREFULLY  
BEFORE USING THIS FIREARM**

## **SAFETY FIRST**

**Please do not use your shotgun before reading safety rules and this manual.**

Observe these rules of safe gun handling.

1. Always keep the muzzle pointed in a safe direction. Watch the muzzle at all time, never point a gun. accidentally or intentionally, at any person or anything you do not intend to shoot. Identify the target before shooting; do not shoot at sounds.
2. Always treat a gun as if it is loaded - it may be!
3. Keep your finger off the trigger while operating the action and at all other times until you are ready to shoot.
4. Keep the safety "on" or in the "safe" position at all times until you are ready to fire. Do not rely on your gun's safety, the safety on any gun is a mechanical device and is not intended as a substitute for common sense or safe gun handling.
5. Learn how your gun functions and handles. If you do not thoroughly understand the proper use and care of your gun, seek the advice of someone who is knowledgeable.
6. Do not alter or modify any part of the firearm.
7. Store guns unloaded, separate from any ammunition, and out of the reach of children.
8. Be sure the barrel is clear of any obstructions before loading. Make it a habit to check the barrel every time before loading.
9. Be sure you have and use the proper ammunition. A 20 gauge shell will enter a 12 gauge chamber far enough so that a 12 gauge shell can be loaded behind it. Also, a 3 inch shell may fit into a 2 inch chamber, but the crimp at the mouth of the shell will unfold into the forcing cone. If either of these things occur and you fire the gun, the gun will explode, damaging the gun and possibly causing serious injury or death to you and those around you.
10. Wear protective shooting glasses and adequate ear protection when shooting.
11. Never climb or jump over anything, such as a tree, fence, or ditch, with a loaded gun. Put safety ON. Open the barrel on barrel break shotguns, remove the shells/discharge the chamber on pump and semi-auto shotguns and hand the gun to someone else or place it on the ground on the other side of the obstacle before crossing it yourself. Do not lean a gun against a tree or other object; it could fall and possibly discharge.
12. Do not shoot at a hard surface or at water. Bullet and shot can ricochet or bounce off and travel in unpredictable directions with great velocity.
13. Never transport a loaded gun. DO NOT place a loaded gun into a vehicle. The gun should be unloaded and placed into a case when not in use.
14. Never drink alcoholic beverages before or during shooting.
15. Never try to repair the shotgun on your own if you are not educated or expert of. This may cause un-willed damage to your gun which may seriously injure you or someone around you.
16. Never fire your gun without choke tubes (if comes with interchangeable choke tubes and a thread in the muzzle) snugly tightened in barrels.

## **ABOUT LEVER ACTION SHOTGUN**

Pardus Lever action shotgun is manually operated. Once a Shell has been fired, the locking lug in the bolt moves down, unlocking the gun. The lever can then be moved forward and backward again, ejecting empty shell and loading a cartridge.

### **SAFETY SWITCH OR BUTTON**

The safety is designed to stop trigger mechanism.

**DON'T RELY ON YOUR GUN'S SAFETY, TREAT EVERY GUN AS IF IT WERE LOADED AND READY TO FIRE.** The safety on any gun is a mechanical device and it is not intended as a substitute for common sense or safe gun handling. Always keep the muzzle pointed in a safe direction.

A- The safety is located behind the trigger, and protection against accidental or unintentional discharge under normal usage when properly used.

B- To engage the safety, push the button so that it protrudes from the right side of the gun and the **RED BAND MARKING CAN NOT BE SEEN.** The safety should always be in the "on" or "safe" position until you intend to fire the gun. (Photo 1)

C- When you are ready to fire the gun, press the safety button to the "off" position so that the safety protrudes from the left side of the gun and the **RED BAND MARKING IS SHOWING.**

**DANGER :** The gun will fire when the trigger is pulled intentionally or accidentally when the **RED BAND MARKING IS SHOWING.**



Remove the magazine cap.  
(Photo 1)

## ASSEMBLY



Remove the fore-end. (Photo 2)



Unscrew the barrel locker nut. (Photo 3)



Hold the barrel ahead of the guide ring. Slide the barrel guide ring over the magazine tube into the receiver. (Photo 4) DON'T FORCE IT!



Screw the barrel locker nut. (Photo 5)



Insert the fore-end. (Photo 6)



Screw the magazine cap. (Photo 7)

## DISASSEMBLY



Remove the magazine cap. (Photo 8)



Remove the fore-end. (Photo 9)



Unscrew the barrel locker nut. (Photo 10)



Slide the barrel guide ring over the magazine tube and take out. (Photo 11)



Unscrew the connector screw of lever from the trigger guard. (Photo 12)



Unscrew the connector screw of two rods of mechanism and lever. (Photo 13)

## LOADING SHOTGUN



Take out the mechanism and action bar from the receiver. (Photo 14)



Put safety in the "ON" position. (Photo 15)  
Point the gun in a safe direction. Push the lever forward to open ejection port.



### **WARNING!..**

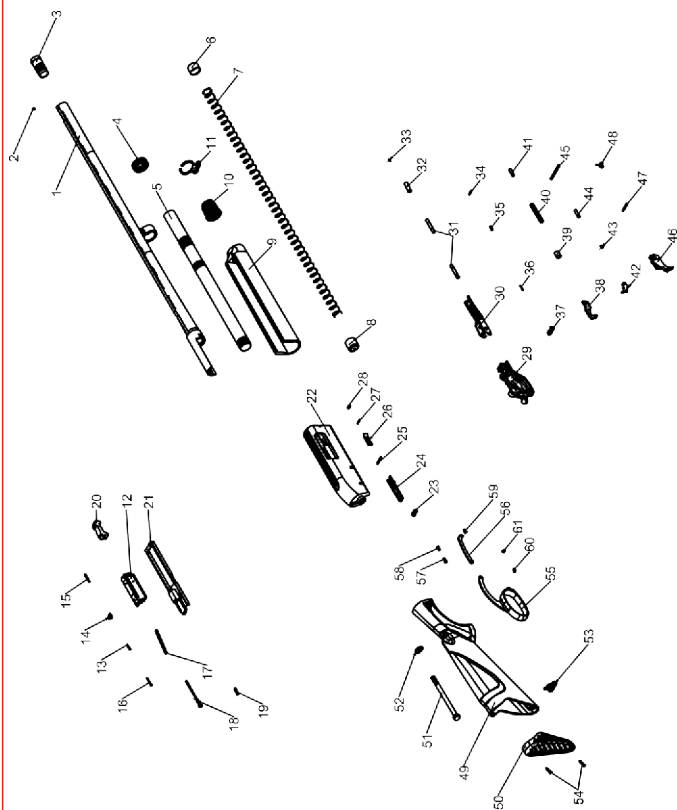
To wear a ring during usage of lever action shotgun may cause injury of fingers or damage on the ring. (Photo 18)

1. Put safety in the "ON" position. (Photo 15)
2. Point the gun in a safe direction.
3. Push the lever forward to open ejection port.
4. Insert the cartridge into the chamber. (Photo 16)
5. Pull back the lever and close the action.

### **FULLY LOADING THE SHOTGUN**

1. Put safety in the "ON" position. (photo 15)
2. Point the gun in a safe direction.
3. Push the lever forward to open ejection port.
4. Insert the cartridge into the chamber. (Photo 16)
5. Pull back the lever and close the action.
6. Load the additional cartridges by inserting them through the loading port on the bottom of the receiver and pushing them into the magazine. (Photo 17)

# LEVERACTION SHOTGUN GENERAL ASSEMBLY




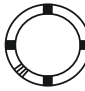


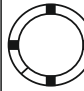
## LEVER ACTION SHOTGUN GENERAL ASSEMBLY PART LIST

PART NO	DESCRIPTION	PART NO	DESCRIPTION
1	BARREL	32	HAMMER PIN CASE
2	FRONT SIGHT	33	PIN CASE SPRING
3	CHOKE TUBE	34	SAFETY BUTTON SPRING
4	BARREL RETAINER NUT	35	SAFETY BUTTON BUSHING
5	MAGAZINE	36	SAFETY BUTTON PIN
6	MAGAZINE SPRING UPPER PLUG	37	SAFETY BUTTON
7	MAGAZINE SPRING	38	HAMMER
8	MAGAZINE SPRING BOTTOM PLUG	39	HAMMER PIN CAPSULE
9	FORE-END	40	HAMMER SPRING
10	MAGAZINE CAP	41	HAMMER PIN
11	SLING SWIVEL (BARREL)	42	CARRIER LIFTER
12	BOLT	43	CARRIER LIFTER PIN
13	EXTRACTOR SPRING PIN	44	CARRIER LIFTER SPRING CASE
14	EXTRACTOR	45	CARRIER LIFTER SPRING
15	EXTRACTOR SPRING	46	TRIGGER
16	EXTRACTOR PIN	47	TRIGGER PIN
17	FIRING PIN SPRING	48	TRIGGER SPRING
18	FIRING PIN	49	STOCK
19	FIRING PIN RETAINER	50	RECOIL PAD
20	LOCK	51	STOCK SCREW
21	ACTION BAR	52	STOCK SCREW WASHER
22	RECEIVER	53	SLING SWIVEL (STOCK)
23	CARRIER LATCH SPRING	54	RECOIL PAD SCREWS ( 2 PCS.)
24	CARRIER LATCH	55	LEVER
25	CARRIER LATCH PIN	56	LEVER JOINT
26	BUTTON	57	LEVER BUSHING
27	BUTTON PIN	58	LEVER SCREW
28	BUTTON SPRING	59	LEVER JOINT CONNECTION SCREW
29	TRIGGER GUARD	60	LEVER CONNECTION SCREW
30	CARTRIDGE CARRIER	61	LEVER CONNECTION LOCK SCREW
31	RECEIVER PINS ( 2 PCS.)		



## USAGE OF CHOKE TUBES

The choke is what controls the openness or tightness of the pattern of your shotgun. The chart below lists the choke available (from open to tight), and the corresponding marks that indicate the choke of your specific shotgun.

	C	IC	M	IM	F
CHOKE TUBE					
BBLS	*****	****	***	**	*

Never fire or run gun cleaning tools through a barrel that uses choke tubes without having a choke tube installed. The threads of the choke tube and the internal threads of the barrel should be cleaned after each use and before installation of the tube.

To install a tube, insert the tube into the barrel and tighten with your fingers. Once the tube is finger tightened, tighten with the appropriate choke-tube wrench until the tube is snug. **DO NOT over tighten or forcefully tighten with wrench.**

## USAGE OF STEEL SHOT

The choke (bore constriction) in all modern shotguns has been established based on the pattern performance of shot shells loaded with lead shot. When using the steel shot shells, you will notice a different performance in pattern density versus the established lead shot pattern, because the steel shot is harder and lighter than lead shot.

**You should be aware of the following differences and cautions:**

**Never shoot steel shot loads in a full choked barrel or full choke tubed barrel. To do so may cause the barrel to swell or rupture.** In general, steel shot fired with a modified choke will produce the equivalent of a lead full choke pattern. This will be true of all steel shot sizes up to and including no. 2. The established improved cylinder chokes will produce the equivalent of a (lead) modified choke pattern.

All steel shot sized larger than no. 2, and including special sized such as -F-, "T", etc., should be used only with improved cylinder chokes. These steel shot sized, when used in improved cylinder chokes, will produce patterns equivalent to (lead) full choke patterns. The established cylinder choke or bore will produce the equivalent of a modified (lead) pattern.

## **MAINTENANCE AND CLEANING**

**Caution :** Make sure the gun is UNLOADED and take help from an experienced person or gunsmith if you do not have self confidence of a true maintenance.

1. Make sure the broad, polished finely fitted mating surface of the breech block and receiver is especially clean and lightly oiled with high quality gun oil. Do not use silicone or lanolin.

2. Run an oil patch through the bore with a cleaning rod starting from the breech end. To prevent leading, use a cleaning solvent and brass brush to clean the bore periodically. Follow this cleaning with one or two clean oil patches. Important: If your gun is equipped with choke tubes, do not use a brass brush to clean the barrels without having a choke tube installed. Barrels that utilize choke tubes must also have the choke tubes removed to clean and oil the threads inside the barrel and the choke tubes themselves. This will protect the threads and prevent dirt build up that can cause tubes to become difficult to remove.

Do not over tighten choke tubes. Wipe all exposed metal surface with an oiled cloth before storing. Do not squirt or pour oil into the inside mechanism because it may hamper proper functioning. After extended periods of heavy use, your gun should be taken to a qualified gunsmith to have the action disassembled for professional cleaning and lubrication.

3. Care for your wood stock and forearm the same way you would a piece of furniture with the same finish.

## WARRANTY AND AFTER SALES SERVICE

**Pardus** agrees to service its products thru your country importer free of charge for defects in materials and workmanship in accordance with the service agreement listed below.

The obligation of **Pardus** under this agreement is limited to the repair or replacement of unserviceable parts and does not cover any incidental or consequential damages. Other than the express warranty contained herein **Pardus** makes no warranties, express or implied.

**Pardus** will repair or replace any unserviceable part(s) for one (1) year from date of purchase in accordance with the above warranty statement provided your product had not been altered, abused, willfully damaged, or damaged by overpressure ammunition. And further guarantees to supply parts with its cost for following additional 5 years.

This agreement is not transferable; its benefits apply only to the original purchaser. To obtain free service during the time this agreement is in effect, make sure your product is unloaded, and send it to your **Country Importer**. If you do not know the importer and would like us to track for you, please provide us your country information and the serial number of your gun. This agreement and the warranties contained herein are void if you are not the licenced owner of the gun.



**PARDUS SAVUNMA VE AV SANAYİ İTHALAT VE İHRACAT LTD. STİ.**

**Dudullu OSB, İmes San. Sitesi B Blok 205. Sk. No.22**

**Ümraniye 34776 - İstanbul / TÜRKİYE**

**P: +90 216 642 2353 PBX • F: +90 216 642 2360**

**[www.pardusarms.com](http://www.pardusarms.com)**

**[pardusarms@pardusarms.com](mailto:pardusarms@pardusarms.com)**