



**SIDE BY SIDE SHOTGUN
INSTRUCTION MANUAL
MODEL PARDUS DB/DE**

**READ THE INTRUCTIONS AND
WARNINGS IN THIS MANUAL CAREFULLY
BEFORE USING THIS FIREARM**

SAFETY FIRST

Please do not use your shotgun before reading safety rules and this manual.

Observe these rules of safe gun handling.

1. Always keep the muzzle pointed in a safe direction. Watch the muzzle at all time, never point a gun, accidentally or intentionally, at any person or anything you do not intend to shoot. Identify the target before shooting; do not shoot at sounds.
2. Always treat a gun as if it is loaded - it may be!
3. Keep your finger off the trigger while operating the action and at all other times until you are ready to shoot.
4. Keep the safety "on" or in the "safe" position at all times until you are ready to fire. Do not rely on your gun's safety, the safety on any gun is a mechanical device and is not intended as a substitute for common sense or safe gun handling.
5. Learn how your gun functions and handles. If you do not thoroughly understand the proper use and care of your gun, seek the advice of someone who is knowledgeable.
6. Do not alter or modify any part of the firearm.
7. Store guns unloaded, separate from any ammunition, and out of the reach of children.
8. Be sure the barrel is clear of any obstructions before loading. Make it a habit to check the barrel every time before loading.
9. Be sure you have and use the proper ammunition. A 20 gauge shell will enter a 12 gauge chamber far enough so that a 12 gauge shell can be loaded behind it. Also, a 3 inch shell may fit into a 2 inch chamber, but the crimp at the mouth of the shell will unfold into the forcing cone. If either of these things occur and you fire the gun, the gun will explode, damaging the gun and possibly causing serious injury or death to you and those around you.
10. Wear protective shooting glasses and adequate ear protection when shooting.
11. Never climb or jump over anything, such as a tree, fence, or ditch, with a loaded gun. Put safety ON. Open the barrel on barrel break shotguns, remove the shells/discharge the chamber on pump and semi-auto shotguns and hand the gun to someone else or place it on the ground on the other side of the obstacle before crossing it yourself. Do not lean a gun against a tree or other object; it could fall and possibly discharge.
12. Do not shoot at a hard surface or at water. Bullet and shot can ricochet or bounce off and travel in unpredictable directions with great velocity.
13. Never transport a loaded gun. DO NOT place a loaded gun into a vehicle. The gun should be unloaded and placed into a case when not in use.
14. Never drink alcoholic beverages before or during shooting.
15. Never try to repair the shotgun on your own if you are not educated or expert of. This may cause un-willed damage to your gun which may seriously injure you or someone around you.
16. Never fire your gun without choke tubes (if comes with interchangeable choke tubes and a thread in the muzzle) snugly tightened in barrels.

ASSEMBLY

Make sure there are no shells in the chamber.

1. Remove all dirt and excess oil from the gun, especially from the breech area, also barrel interior and ends.

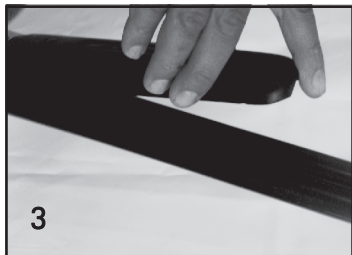
2. Remove the forearm by pushing the forehead iron catch upwards. Allowing the nose of the forearm to release and pull it with the other hand at the same time to separate the forearm from the barrel. (Photos 1)



3. Lightly oil the already cleaned contact points. Attack barrels to action by grasping the grip of the stock with your right hand and placing the stock under your right arm. With your right thumb move the opening lever to the right. Now hold the barrels with your free hand and slide the barrels through the top of the receiver, with the barrels nose pointing down, until the hinge notch engages with the hinge pins. (Photos 2)

4. Keeping the hinge pin notch engaged with the hinge pin. lift the nose of the barrels until the action closes. Caution: If as you attempt to close the gun the barrels bind or don't seem to fit then the hinge pin and notch are not engaged. DO NOT FORCE, try again. Release the hinge pin and notch, and the barrels will be locked in place.

5. Replace the forearm on the gun by sliding the rear of the forearm into the barrel at the same angle by which you removed it. The round rear of the forearm should match the round front of the receiver, lift the nose of the forearm until it engages with the barrels with an audible click. If it does not click, slap the forearm with the palm of your hand. If the forearm release latch protrudes after the click, gently push it in place. (Photos 3)



LOADING AND OPERATING YOUR SHOTGUN

1. Slide the safety, located on the tang of the receiver, toward the butt of the gun into the "Safe" position.
2. Break open the action.
3. Check the barrels for any obstructions, including dirt and excess oil. Caution: Obstructions can increase barrel pressure sufficiently so that the barrel can explode when the gun is fired. This may result in serious injury or death to the shooter and others in the vicinity.
4. Insert shot shells into the chamber or chambers you plan to fire. Caution: Make sure the shells are of the proper gauge and chamber length for your gun.

Kral Av is not responsible for damage to gun or shooter caused by malfunctioning ammunition, new, remanufactured, reloaded, or hand loaded.

5. Close the action.
6. The order in which the barrels are fired depends upon the type of trigger.

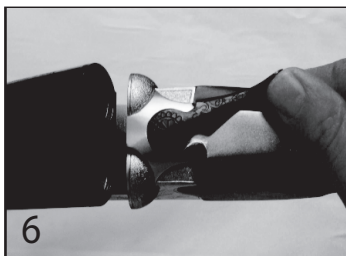
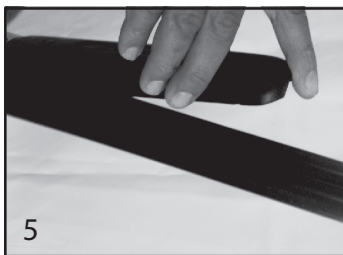
With a selective trigger, the user determines which barrel is fired first by selecting it with the selector button. Moving the button to the right selects the right barrel to fire first on side by side shotgun. Moving the button to the left selects the left barrel to fire first on side by side shotgun.

7. When contemplating firing your gun, be sure of your target, what is behind it, and the location of all persons with you or in your vicinity. Pick your target, release safety by sliding it forward with your thumb, and squeeze the trigger with your forefinger.
8. To unload, press the opening lever to the right and open the action. Models with extractors only will elevate both fired and unfired shells above the chamber.

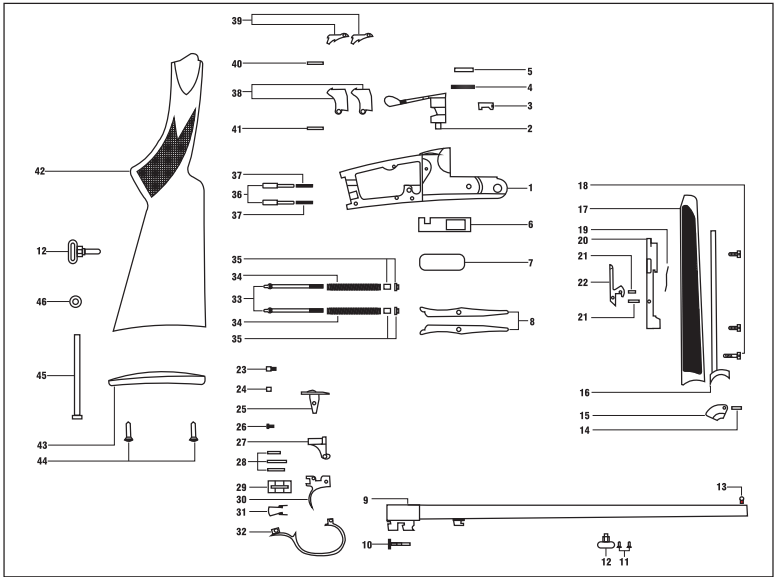
Caution: In case of a misfire, wait at least 30 seconds while keeping the gun pointed in a safe direction. Then, carefully open the action away from yourself and others. If the primer or rim is indented, the shell should be discarded in a manner that would prevent accidental injury to you or others. If there is no indentation the primer or rim, your gun has malfunctioned and should be serviced by a qualified gunsmith. If the gun is under warranty it must be serviced by an Authorized Warranty Repair Station.

DISASSEMBLY

1. Make sure the gun is unloaded and no shells are in the chambers.
2. Close the action. Place the gun butt on your thigh and remove the forearm by pulling the forearm release latch or pressing forearm release button. While pulling the nose of the forearm away from the barrels, slide the forearm forward until separated from the barrels. (Photos 4-5)
3. Separate the barrels from the receiver by holding the stock of the gun in your right hand and the barrels in your left. Push the opening lever to the right with your thumb. Allow the nose of the barrels to drop and lift the barrels upward out of the receiver. (Photos 6-7)
4. The gun can now be cleaned. The forearm should be reattached to the barrels for storage.
Caution: No further disassembly is needed, unless it is done by persons qualified in shotgun repair. Improper functioning and damage to the gun may result otherwise.









SIDE BY SIDE SHOTGUN 12GA GENERAL ASSEMBLY AND PART LIST



- | | | |
|------------------------|---------------------------|-------------------------------|
| 1 Receiver | 16 Forearm Iron | 31 Trigger Spring |
| 2 Top Lever | 17 Forearm | 32 Trigger Guard |
| 3 Top Lever Case | 18 Forearm Screw | 33 Hammer Spring |
| 4 Top Lever Spring | 19 Takedown Latch Spring | 34 Hammer Pin |
| 5 Top Lever Pin | 20 Takedown Latch Bracket | 35 Hammer Pin Screw |
| 6 Locking Block | 21 Takedown Latch Pin | 36 Firing Pin |
| 7 Receiver Plate | 22 Takedown Latch | 37 Firing Pin Spring |
| 8 Hammer (left-right) | 23 Safety Screw | 38 Hammer (left-right) |
| 9 Barrel | 24 Safety Screw Pin | 39 Hammer Inside (left-right) |
| 10 Extractor | 25 Safety | 40 Hammer Inside Pin |
| 11 Swivel Pin | 26 Selector Switch Screw | 41 Hammer Screw Pin |
| 12 Swivel | 27 Selector Switch | 42 Stock |
| 13 Front Bead | 28 Pins | 43 Butt Plate |
| 14 Cartridge Push Back | 29 Safety Plate | 44 Butt Plate Screw |
| 15 Extractor Push Rod | 30 Trigger | 45 Stock Bolt |
| | | 46 Stock Bolt Washer |

USAGE OF CHOKE TUBES

The choke is what controls the openness or tightness of the pattern of your shotgun. The chart below lists the choke available (from open to tight), and the corresponding marks that indicate the choke of your specific shotgun.

	SKEET	IC	M	IM	F	XF
CHOKE TUBE						
BBLs	CL	****	***	**	*	XF

Never fire or run gun cleaning tools through a barrel that uses choke tubes without having a choke tube installed. The threads of the choke tube and the internal threads of the barrel should be cleaned after each use and before installation of the tube.

To install a tube, insert the tube into the barrel and tighten with your fingers. Once the tube is finger tightened, tighten with the appropriate choke-tube wrench until the tube is snug. **DO NOT over tighten or forcefully tighten with wrench.**

USAGE OF STEEL SHOT

The choke (bore constriction) in all modern shotguns has been established based on the pattern performance of shot shells loaded with lead shot. When using the steel shot shells, you will notice a different performance in pattern density versus the established lead shot pattern, because the steel shot is harder and lighter than lead shot.

You should be aware of the following differences and cautions:
Never shoot steel shot loads in a full choked barrel or full choke tubed barrel. To do so may cause the barrel to swell or rupture. In general, steel shot fired with a modified choke will produce the equivalent of a lead full choke pattern. This will be true of all steel shot sizes up to and including no. 2. The established improved cylinder chokes will produce the equivalent of a (lead) modified choke pattern.

All steel shot sized larger than no. 2, and including special sized such as -F-, "T", etc., should be used only with improved cylinder chokes. These steel shot sized, when used in improved cylinder chokes, will produce patterns equivalent to (lead) full choke patterns. The established cylinder choke or bore will produce the equivalent of a modified (lead) pattern.

MAINTENANCE AND CLEANING

Caution : Make sure the gun is UNLOADED and take help from an experienced person or gunsmith if you do not have self confidence of a true maintenance.

1. Make sure the broad, polished finely fitted mating surface of the breech block and receiver is especially clean and lightly oiled with high quality gun oil. Do not use silicone or lanolin.

2. Run an oil patch through the bore with a cleaning rod starting from the breech end. To prevent leading, use a cleaning solvent and brass brush to clean the bore periodically. Follow this cleaning with one or two clean oil patches. Important: If your gun is equipped with choke tubes, do not use a brass brush to clean the barrels without having a choke tube installed. Barrels that utilize choke tubes must also have the choke tubes removed to clean and oil the threads inside the barrel and the choke tubes themselves. This will protect the threads and prevent dirt build up that can cause tubes to become difficult to remove.

Do not over tighten choke tubes. Wipe all exposed metal surface with an oiled cloth before storing. Do not squirt or pour oil into the inside mechanism because it may hamper proper functioning. After extended periods of heavy use, your gun should be taken to a qualified gunsmith to have the action disassembled for professional cleaning and lubrication.

3. Care for your wood stock and forearm the same way you would a piece of furniture with the same finish.



WARRANTY AND AFTER SALES SERVICE

Pardus agrees to service its products thru your country importer free of charge for defects in materials and workmanship in accordance with the service agreement listed below.

The obligation of **Pardus** under this agreement is limited to the repair or replacement of unserviceable parts and does not cover any incidental or consequential damages. Other than the express warranty contained herein **Pardus** makes no warranties, express or implied.

Pardus will repair or replace any unserviceable part(s) for one (1) year from date of purchase in accordance with the above warranty statement provided your product had not been altered, abused, willfully damaged, or damaged by overpressure ammunition. And further guarantees to supply parts with its cost for following additional 5 years.

This agreement is not transferable; its benefits apply only to the original purchaser. To obtain free service during the time this agreement is in effect, make sure your product is unloaded, and send it to your **Country Importer**. If you do not know the importer and would like us to track for you, please provide us your country information and the serial number of your gun. This agreement and the warranties contained herein are void if you are not the licenced owner of the gun.



PARDUS SAVUNMA VE AV SANAYI
ITHALAT VE IHRACAT LTD. STI.
Mehmet Akif Mah. Gunyamac Cad.
Ilkbahar Sk. No: 5/4 34782
Cekmekoy, Istanbul, TURKIYE
P: +90 216 642 2353 PBX
F: +90 216 642 2360
www.pardusarms.com
pardusarms@pardusarms.com