



PARDUS

**STRAIGHT PULL BOLT ACTION SHOTGUN
INSTRUCTION MANUAL
MODEL PARDUS BA AND PARDUS BA MF**

**READ THE INTRUCTIONS AND
WARNINGS IN THIS MANUAL CAREFULLY
BEFORE USING THIS FIREARM**

SAFETY FIRST

Please do not use your shotgun before reading safety rules and this manual.

Observe these rules of safe gun handling.

1. Always keep the muzzle pointed in a safe direction. Watch the muzzle at all time, never point a gun accidentally or intentionally, at any person or anything you do not intend to shoot. Identify the target before shooting; do not shoot at sounds.
2. Always treat a gun as if it is loaded - it may be!
3. Keep your finger off the trigger while operating the action and at all other times until you are ready to shoot.
4. Keep the safety "on" or in the "safe" position at all times until you are ready to fire. Do not rely on your gun's safety, the safety on any gun is a mechanical device and is not intended as a substitute for common sense or safe gun handling.
5. Learn gun functions and handles. If you do not thoroughly understand the proper use and care of your gun, seek the advice of someone who is knowledgeable.
6. Do not alter or modify any part of the firearm.
7. Store guns unloaded, separate from any ammunition, and out of the reach of children.
8. Be sure the barrel is clear of any obstructions before loading. Make it a habit to check the barrel every time before loading.
9. Be sure you have and use the proper ammunition. A 20 gauge shell will enter a 12 gauge chamber far enough so that a 12 gauge shell can be loaded behind it. Also, a 3 inch shell may fit into a 2 inch chamber, but the crimp at the mouth of the shell will unfold into the forcing cone. If either of these things occur and you fire the gun, the gun will explode, damaging the gun and possibly causing serious injury or death to you and those around you.
10. Wear protective shooting glasses and adequate ear protection when shooting.
11. Never climb or jump over anything, such as a tree, fence, or ditch, with a loaded gun. Put safety ON. Open the barrel on barrel break shotguns, remove the shells/discharge the chamber on pump and semi-auto shotguns and hand the gun to someone else or place it on the ground on the other side of the obstacle before crossing it yourself. Do not lean a gun against a tree or other object; it could fall and possibly discharge.
12. Do not shoot at a hard surface or at water. Bullet and shot can ricochet or bounce off and travel in unpredictable directions with great velocity.
13. Never transport a loaded gun. DO NOT place a loaded gun into a vehicle. The gun should be unloaded and placed into a case when not in use.
14. Never drink alcoholic beverages before or during shooting.
15. Never try to repair the shotgun on your own if you are not educated or expert of. This may cause un-willed damage to your gun which may seriously injure you or someone around you.
16. Never fire your gun without choke tubes (if comes with interchangeable choke tubes and a thread in the muzzle) snugly tightened in barrels.

SAFETY SWITCH OR BUTTON

The safety is designed to stop trigger mechanism.

DON'T RELY ON YOUR GUNS SAFETY, TREAT EVERY GUN AS IF IT LOADED AND READY TO FIRE. The safety on any gun is a mechanical device and it is not intended as a substitute for common sense or safe gun handling. Always keep the muzzle pointed in a safe direction.

A-The safety is located behind the trigger, and protection against accidental or unintentional discharge under normal usage when properly used.

B-To engage the safety push the button so that it protrudes from the right side of the gun and the **RED BAND MARKING CAN NOT BE SEEN.** The safety should always be in the "on" or "safe" position until you intent to fire the gun.

C-When you are ready to fire the gun, press the safety button to the "off" position so that the safety protrudes from the left side of the gun and the **RED BAND MARKING IS SHOWING.**

DANGER: The gun will fire when the trigger is pulled intentionally or accidentally when the **RED BAND MARKING IS SHOWING.**

PARDUS BA ASSEMBLY



Remove the gun from box and unscrew the fore-end cap **(Photo 1)**



Remove the fore- end **(Photo 2)**



Unscrew the barrel locker nut **(Photo 3)**



Bolt handle is screwed into the right handle bracket (**Photo 4**)



Hold the barrel ahead of the guide ring and slide the barrel into the receiver. **DON'T FORCE IT!** (**Photo 5**)



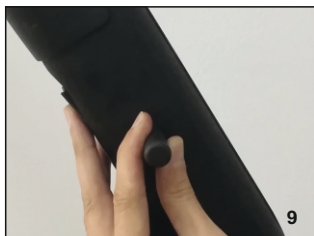
Screw on the barrel locker nut (**Photo 6**)



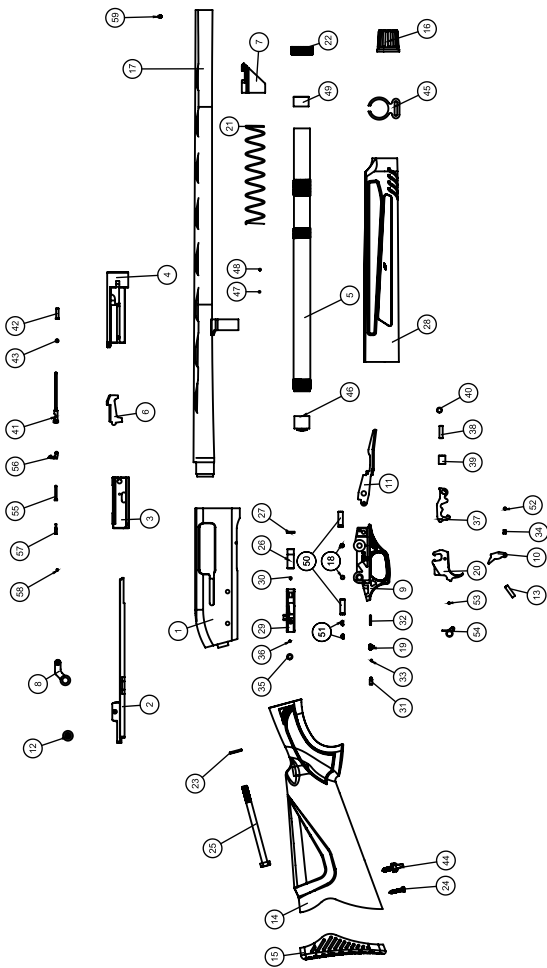
Insert the fore-end (**Photo 7**)



Screw on and fix the fore-end locker cap (**Photo 8**)



Bolt handle is screwed into the handle bracket for left-hand users (**Photo 9**)



**PARDUS BA SHOTGUN
GENERAL ASSEMBLY- PART LIST**

PART NO	DESCRIPTION	PART NO	DESCRIPTION
1	RECIEVER	31	SAFETY BUSER
2	ACTION BAR	32	SAFETY PIN
3	MECHANISM	33	SAFETY SPRING
4	BARREL EXTENTION	34	CARRIER LATCH PUNCH
5	MAGAZINE TUBE	35	CARTRIDGE STOPPER LOCK SPRING
6	LOCK	36	CARTRIDGE STOPPER CRACKED PIN
7	ACTION BAR TUBE	37	HAMMER
8	BOLT HANDLE (RIGHT)	38	HAMMER PIN
9	TRIGGER GUARD	39	HAMMER SPRING HOUSING
10	CARRIER LATCH	40	HAMMER SPRING
11	CARRIER	41	FIRING PIN
12	BOLT HANDLE (LEFT)	42	FIRING PIN RETAINING PIN
13	CARRIER LATCH SPRING STOPPER	43	FIRING PIN SPRING
14	STOCK	44	SWIVEL (STOCK)
15	RECOIL PAD	45	SWIVEL (BARREL)
16	FORE-END CAP	46	MAGAZINE BOTTOM STOPPER (DOWN)
17	BARREL	47	FORE-END CAP BEARING
18	TRIGGER GUARD RETAINING PIN (2PCS)	48	FORE-END CAP SPRING
19	SAFETY BUTTON	49	MAGAZINE BOTTOM STOPPER (TOP)
20	TRIGGER	50	TRIGGER GUARD PIN HOUSING
21	FIRING PIN SPRING	51	TRIGGER GUARD PIN HOUSING SPRING
22	BARREL RETAINING NUT	52	CARRIER LATCH SPRING
23	STOCK SCREW BUSER	53	TRIGGER PIN
24	RECOIL PAD SCREW	54	TRIGER SPRING
25	STOCK RETAINING SCREW	55	EXTRACTOR PIN
26	CARTRIDGE STOPPER	56	EXTRACTOR
27	BOLT RELEASE PIN	57	EXTRACTOR SPRING PIN
28	FORE-END	58	EXTRACTOR SPRING
29	CARTRIDGE STOPPER LOCK	59	FRONT SIGHT
30	BOLT RELEASE BUTTON SPRING		

PARDUS BA MF ASSEMBLY



Remove the gun from box and unscrew the fore-end cap **(Photo 1)**



Remove the fore- end **(Photo 2)**



Unscrew the barrel locker nut **(Photo 3)**



Bolt handle is screwed into the right handle bracket **(Photo 4)**



Hold the barrel ahead of the guide ring and slide the barrel into the receiver. **DON'T FORCE IT! (Photo 5)**



Screw on the barrel locker nut **(Photo 6)**



Insert the fore-end (**Photo 7**)



Screw on and fix the fore-end locker cap (**Photo 8**)



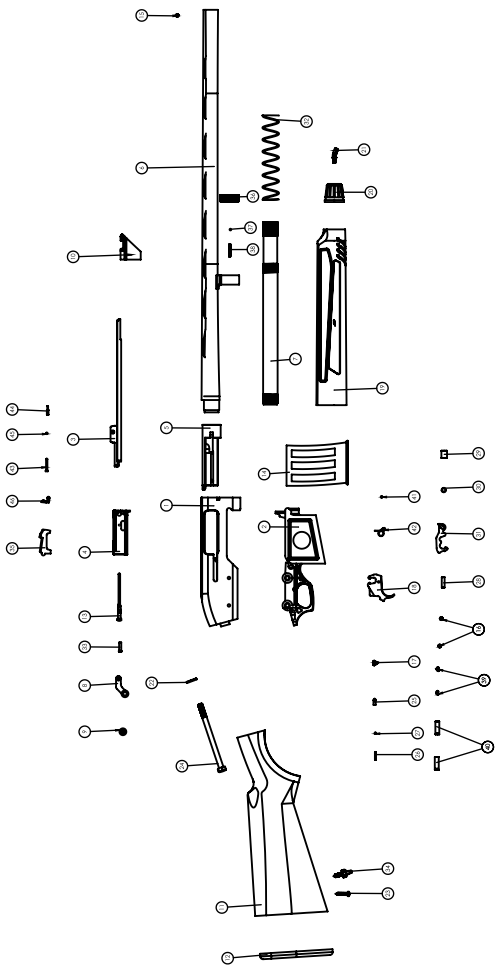
Insert the magazine and shotgun is ready for use (**Photo 9**)



Bolt handle is screwed into the handle bracket for left-hand users (**Photo 10**)



Filling a magazine by pushing each cartridge inside (**Photo 11**)




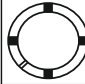
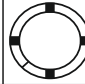


**PARDUS BA MF SHOTGUN
GENERAL ASSEMBLY- PART LIST**

PART NO	DESCRIPTION	PART NO	DESCRIPTION
1	RECIEVER	24	STOCK RETAINING SCREW
2	TRIGGER GUARD	25	SAFETY BUSER
3	ACTION BAR	26	SAFETY PIN
4	MECHANISM	27	SAFETY SPRING
5	BARREL EXTENTION	28	HAMMER PIN
6	BARREL	29	HAMMER SPRING HOUSING
7	FORE-END TUBE	30	HAMMER SPRING
8	BOLT HANDLE (RIGHT)	31	HAMMER
9	BOLT HANDLE (LEFT)	32	RETURN SPRING
10	ACTION BAR TUBE	33	FIRING PIN RETAINING PIN
11	STOCK	34	SWIVEL (STOCK)
12	RECOIL PAD	35	LOCK
13	FIRING PIN	36	BARREL RETAINING NUT
14	MAGAZINE	37	FORE-END CAP BEARING
15	FRONT SIGHT	38	FORE-END CAP SPRING
16	TRIGGER GUARD RETAINING PIN (2PCS)	39	TRIGGER GUARD PIN HOUSING SPRING
17	SAFETY BUTTON	40	TRIGGER GUARD PIN HOUSING
18	TRIGGER	41	TRIGGER PIN
19	FORE-END	42	TRIGGER SPRING
20	FORE- END CAP	43	EXTRACTOR PIN
21	SWIVEL (BARREL)	44	EXTRACTOR SPRING PIN
22	STOCK SCREW BUSER	45	EXTRACTOR SPRING
23	RECOIL PAD SCREW	46	EXTRACTOR

USAGE OF CHOKES TUBES

The choke is what controls the openness or tightness of the pattern of your shotgun. The chart below lists the choke available (from open to tight), and the corresponding marks that indicate the choke of your specific shotgun.

	C	IC	M	IM	F
CHOKE TUBE					
BBLS	*****	****	***	**	*

Never fire or run gun cleaning tools through a barrel that uses choke tubes without having a choke tube installed. The threads of the choke and the internal threads of the barrel should be cleaned after each use and before installation of the tube.

To install a tube, insert the tube into the barrel and tighten with your fingers. Once the tube is tightened, tighten with the appropriate choke-tube wrench until the tube is snug. **DO NOT over tighten or forcefully tighten with wrench.**

USAGE OF STEEL SHOT

The choke (bore constriction) in all modern shotguns has been established based on the pattern performance of shot shells loaded with lead shot. When using the steel shot shells, you will notice the different performance in pattern density versus the established lead shot pattern, because the steel shot is harder and lighter than lead shot.

You should be aware of the following differences and cautions:

Never shot steel shot loads in a full choked barrel or full choke tubed barrel. To do so may cause the barrel to swell or rupture. In general, steel shot fired with a modified choke will produce the equivalent of a lead full choke pattern. This will be right for all steel shot sizes up to and including no.2. The established improved cylinder chokes will produce the equivalent of a (lead) modified choke pattern.

All steel shot sized larger than no.2, and including special sized such as - F-, "T", etc., should be used only with improved cylinder chokes, will produce patterns equivalent to (lead) full choke patterns. The established cylinder choke or bore will produce the equivalent of a modified (lead) pattern.

MAINTANCE AND CLEANING

Caution: Make sure the gun is UNLOADED and take help from an experienced person or gunsmith if you do not have self-confidence of right maintains.

1. Make sure the broad, polished finally fitted mating surface of the breech block and receiver is especially clean and lightly oiled with high quality gun oil. Do not use silicone or lanolin.

2. Run an oil patch through the bore with a cleaning rod starting from the breech end. To prevent leading use a cleaning solvent and brass brush to clean the bore periodically. Follow this cleaning with one or two clean oil patches. Important: If your gun is equipped with choke tubes, do not use a brass brush to clean the barrels without having a choke tube installed. Barrels that utilize choke tubes must also have the choke tubes removed to clean and oil the threads inside the barrel and the choke tubes themselves. This will protect the threads and prevent dirt build up that can cause tubes difficult to remove.

Do not over tighten choke tubes. Wipe all exposed metal surface with an oiled cloth before storing. Do not squirt or pour oil inside of the mechanism because it may hamper proper functioning. After extended periods of heavy use, your gun should be taken to a qualified gunsmith for disassembled for professional cleaning and lubrication.

3. Care for your food stock and forearm the same way you would care a piece of furniture with the same finish.

WARRANTY AND AFTER SALES SERVICE

Pardus agrees to service its products thru your country importer free of charge for defects in materials and workmanship in accordance with the service agreement listed below.

The obligation of **Pardus** under this agreement is limited to the repair or replacement of unserviceable parts and does not cover any incidental or consequential damages. Other than the express warranty contained here in **Pardus** makes no warranties, express or implied.

Pardus will repair or replace any unserviceable part(s) for two (2) years from date of purchase in accordance with the above warranty statement provided your product had not been altered, abused, willfully damaged or damaged by overpressure ammunition. And further guarantees to supply parts with its cost for following additional 5 years.

This agreement is not transferable; its benefits apply only to the original purchaser. To obtain free service during the time this agreement is in effect, make sure your product is unloaded, and send it to your **Customer Importer**. If you don't know the importer and would like us to track for you, please provide us your country information and the serial number of your gun. This agreement and the warranties contained herein are void if you are not the licensed owner of the gun.



PARDUS SAVUNMA VE AV SANAYI İTHALAT VE İHRACAT LTD. STİ.

Dudullu OSB, İmes San. Sitesi B Blok 205. Sk. No.22

Ümraniye 34776 - İstanbul / TÜRKİYE

P: +90 216 642 2353 PBX • F: +90 216 642 2360

www.pardusarms.com

pardusarms@pardusarms.com